

The Thomas, Kathleen & William  
**DONNELL THEATER**

# Tech Packet



**MARATHON  
CENTER**  
FOR THE PERFORMING ARTS

200 W. Main Cross St. Findlay, OH 45840

(419) 423-2787

MCPA.org

# CONTACTS

## HEATHER J. CLOW

*Executive Director*

419.423.2787 ext. 101

HClow@MCPA.org

## DEVON KING

*Production Coordinator*

419.423.2787 ext. 104  
937.750.5381

DKing@MCPA.org

## DUSTIN DRUCKMAN

*Technical Coordinator*

419.423.2787 ext. 106  
847.445.5555

DDruckman@MCPA.org

# GENERAL INFO

## Backstage

### Dressing Rooms

- 3 Star- private shower, bathrooms, Stage Level
- 2 chorus- showers, bathrooms, Lower Level

### Green Room

### Bathrooms

- 2 accessible- Stage Level

### Loading Dock

- 2 bays at **XX** inches
- Direct path to stage

## Theatre

### House

- Total: 969 seats
- Orchestra: 566
- Mezzanine: 152
- Balcony: 251

### Stage

- Proscenium: 43'x20'
- Plaster to US Wall: 37'-9"
- Width of stage deck: 87'-4"
- Deck to grid: 55'-3"

### Power

- 2@ 400amp cam-lock (G+N turned)
- 1@ 200amp Iso Ground Cam-lock (G+N turned)

### Pianos

- Bösendorfer 9.5' Grand Piano
- Steinway Essex 6' Player Piano
- Upright Rehearsal Piano

200 W. Main Cross St. Findlay, OH 45840

(419) 423-2787

MCPA.org

# AUDIO

## Speakers

### Main Speakers

- (4)-ElectroVoice EVA-20825/906
- (2)-ElectroVoice EVA-20825/920
- (4)-ElectroVoice EVA-20825/1220

### Subwoofers

- (4)-Community B2-215b Dual 15inch

### Front Fills

- (7)-Soundtube RF31-EZ-T-BK enclosures

### Underbalcony Delays

- (15)-Community D8 Ceiling Speakers

### Balcony Delays

- (10)-Community B2-288T Enclosures

### Monitor Speakers

- (4)-ElectroVoice SX300E
- (4)-QSC K10 Powered
- (8)-JBL STX 815M
- (1)-TurboSound IQ1b powered Sub

## Infrastructure

### Amplification

- (5)-Crown DCI 4 1250
- (2)-Crown DCI 8 300
- (1)-Crown DCI 8 600

### Consoles

- FOH- Yamaha QL5
- Monitor- Yamaha QL1

# LIGHTING

## LX

### Console

- ETC Ion with 10x2 fader wing

### Fixtures

- Mix of LED and conventional (see attached plot)

### Spot Lights

- (2)-Canto 1500

## Projection

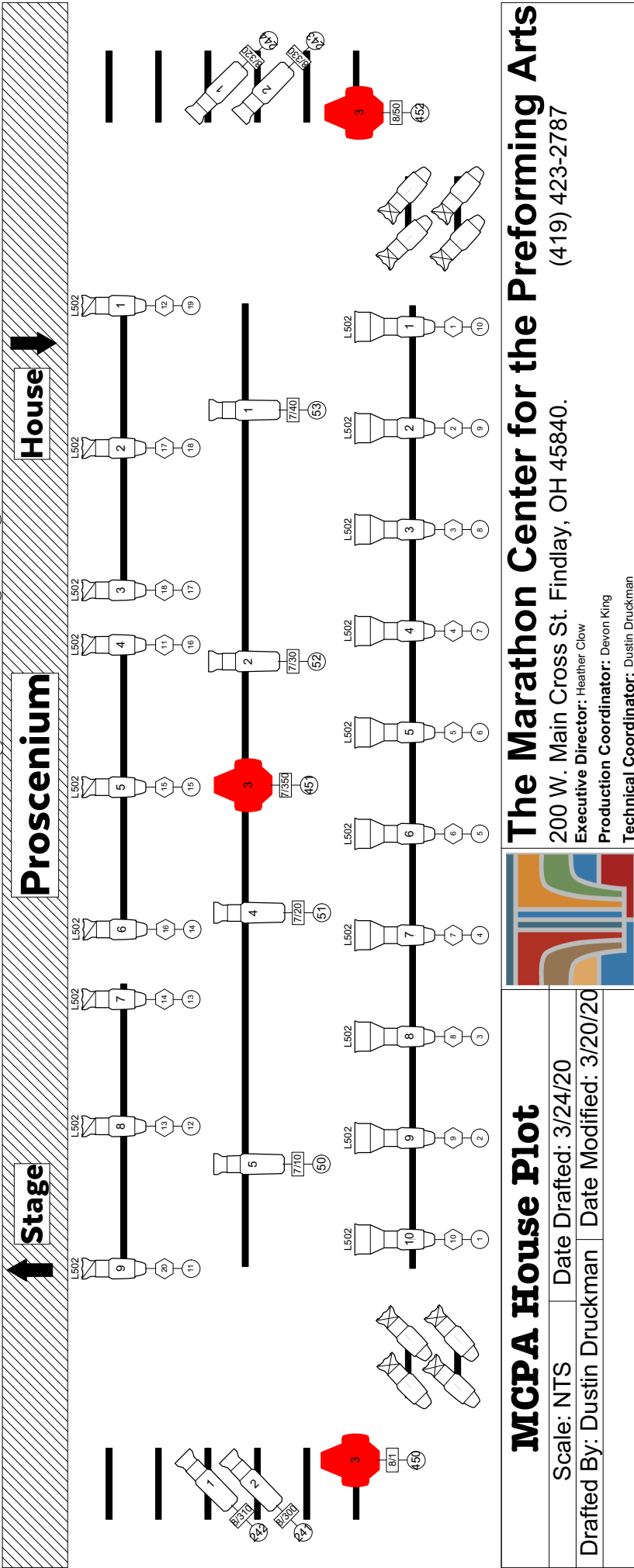
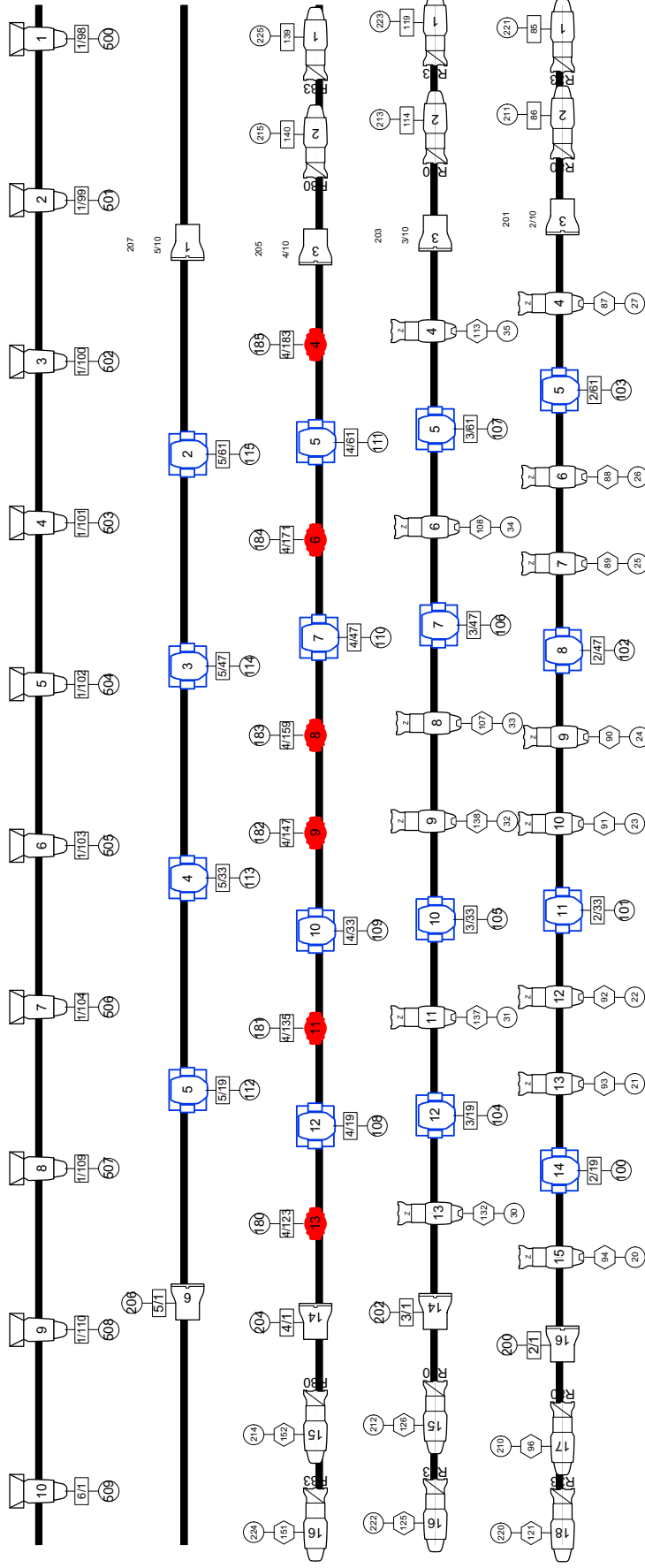
### Projector

- Epson Pro L1505UL Laser WUXGA 3LCD
- 12k Lumens
- Lens 1.19-1.62:1 throw
- HDMI hookup from stage and booth

200 W. Main Cross St. Findlay, OH 45840

(419) 423-2787

MCPA.org



# MCPA House Plot

**The Marathon Center for the Performing Arts**  
 200 W. Main Cross St. Findlay, OH 45840.  
 Executive Director: Heather Clow  
 Production Coordinator: Devon King  
 Technical Coordinator: Dustin Druckman

Scale: NTS Date Drafted: 3/24/20

Drafted By: Dustin Druckman Date Modified: 3/20/20



(419) 423-2787

# LINE SET SCHEDULE

1	0' 9"	Main Border	
2	1' 3"	Main Curtain	
3	1' 9"	Legs 1	
4	3' 0"	1st Electric	Winch with Raceway
5	4' 0"		
6	4' 6"		
7	5' 6"		
8	6' 0"	Legs 2	
9	6' 6"		
10	7' 6"		
11	8' 0"		
12	8' 6"		
13	9' 6"	Border	
14	10' 0"	Legs 3	
15	10' 6"		
16	11' 6"	2nd Elec	
17	13' 0"		
18	14' 0"		
19	14' 6"		
20	15' 0"		
21	15' 6"		
22	16' 0"	Border	
23	16' 6"	Black Traveler (legs)	Track
24	17' 6"		
25	18' 8"	3rd Electric	
26	19' 6"		
27	20' 6"	Black Scrim	
28	21' 6"		
29	22' 6"		
30	23' 0"	Border	
31	24' 0"	Legs 4	
32	25' 6"	4th Electric	
33	26' 6"		
34	27' 0"		
35	28' 0"		
36	29' 0"	Border	
37	30' 0"	Scrim	
38	31' 0"	Legs 5	
39	32' 0"	Cyc/projection screen	
40	33' 0"	5th Electric	Raceway
41	34' 0"		
42	35' 0"		
43	35' 6"		
44	36' 6"	Black Traveler	Track
45	37' 0"	Cyc Bounce	

# IN HOUSE MICROPHONES

## Wireless Mics

### Wireless Mic System

- 12 channels of Shure ULXD4Q
- (8)-Shure ULXD2/SM58
- (12)-Shure ULX1 body packs
- (12)-Countryman E6 headset mics

## Wired Mics

### Wireless Mic System

- 12 channels of Shure ULXD4Q
- (8)-Shure ULXD2/SM58
- (12)-Shure ULX1 body packs
- (12)-Countryman E6 headset mics